



*Canadian Graduate and Professional
Student Survey
2013 Results*

Prepared by the Office of Institutional Research and Analysis

July 2013

Section 1 – Project Summary

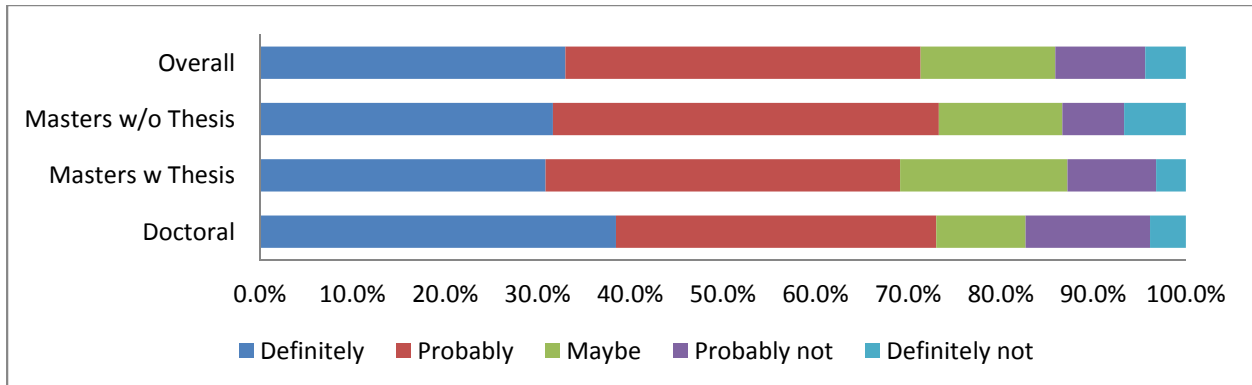
Project Summary	Totals	Doctoral	Masters w Thesis	Masters w/o Thesis
Number of students invited to participate	507	123	173	211
Responses received (partially or totally completed)	208	53	91	61
Response Rate	41.0%	43.1%	52.6%	28.9%
Survey Open Date	25-Feb-13			
Survey Close Date	5-Apr-13			

Section 2 – Student Demographics

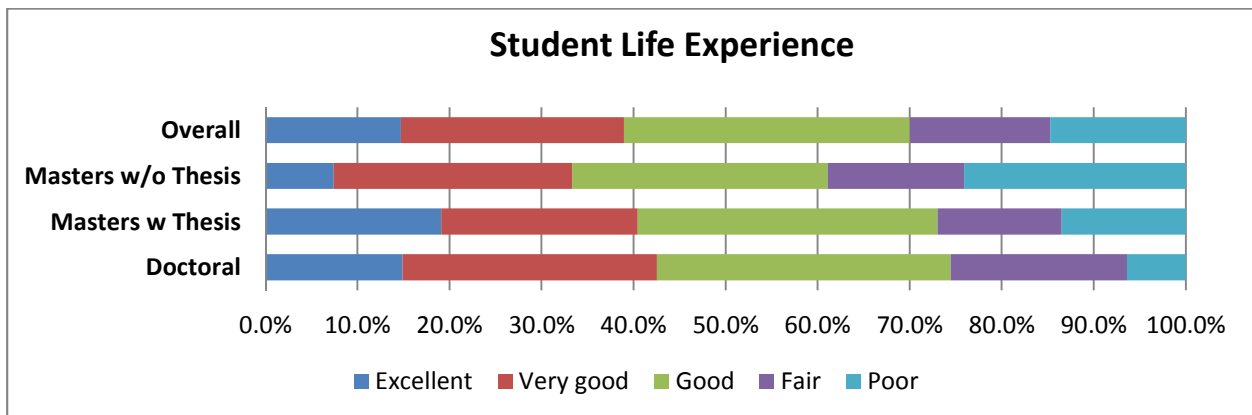
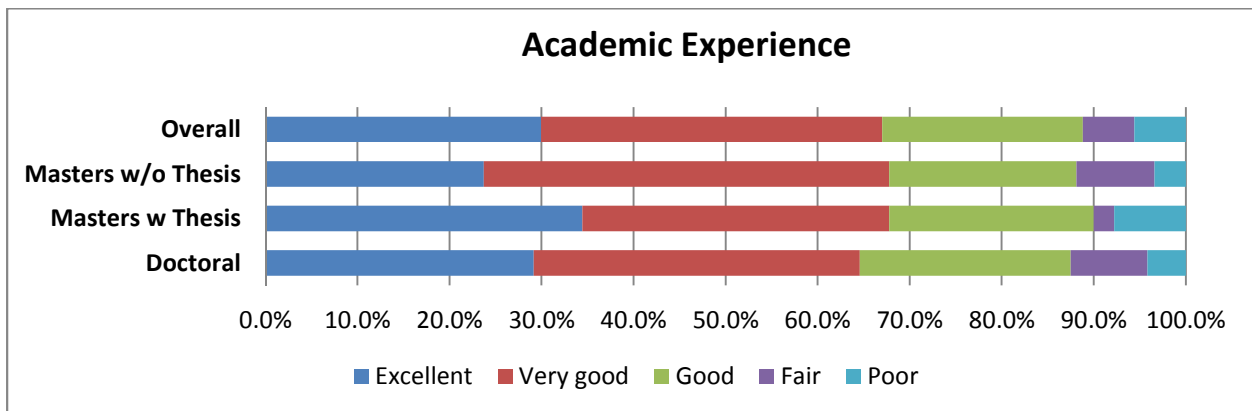
	Doctoral		Masters w Thesis		Masters w/o Thesis		Overall	
	Frequency	Count	Frequency	Count	Frequency	Count	Frequency	Count
Gender								
Male	70.8%	34	65.6%	59	42.4%	25	59.9%	118
Female	29.2%	14	34.4%	31	57.6%	34	40.1%	79
Age								
<=25	13.0%	6	52.2%	47	12.1%	7	30.9%	60
>25	87.0%	40	47.8%	43	87.9%	51	69.1%	134
Marital Status								
Married	50.0%	23	33.3%	30	67.8%	40	47.7%	93
Single	50.0%	23	66.7%	60	32.2%	19	52.3%	102
Dependents								
None	76.1%	35	78.7%	70	55.2%	32	71.0%	137
1 or more	23.9%	11	21.3%	19	44.8%	26	29.0%	56
Citizenship								
Canadian/Permanent Residence	71.7%	33	78.9%	71	91.5%	54	81.0%	158
International	28.3%	13	21.1%	19	8.5%	5	19.0%	37
Academic Load								
Full-Time	90.6%	48	85.1%	80	27.9%	17	69.7%	145
Part-Time	9.4%	5	14.9%	14	72.1%	44	30.3%	63
Degree								
Social Sciences	0.0%	0	12.9%	12	0.0%	0	5.8%	12
Business/Management	1.9%	1	0.0%	0	4.9%	3	1.9%	4
Education	0.0%	0	14.0%	13	63.9%	39	25.1%	52
Engineering	77.4%	41	48.4%	45	18.0%	11	46.9%	97
Physical and Mathematical Sciences	9.4%	5	7.5%	7	0.0%	0	5.8%	12
Biological Sciences	11.3%	6	3.2%	3	0.0%	0	4.3%	9
Health Science	0.0%	0	14.0%	13	0.0%	0	6.3%	13
Arts & Culture	0.0%	0	0.0%	0	1.6%	1	0.5%	1
Finance/Mathematics/Computing	0.0%	0	0.0%	0	3.3%	2	1.0%	2
Other	0.0%	0	0.0%	0	8.2%	5	2.4%	5

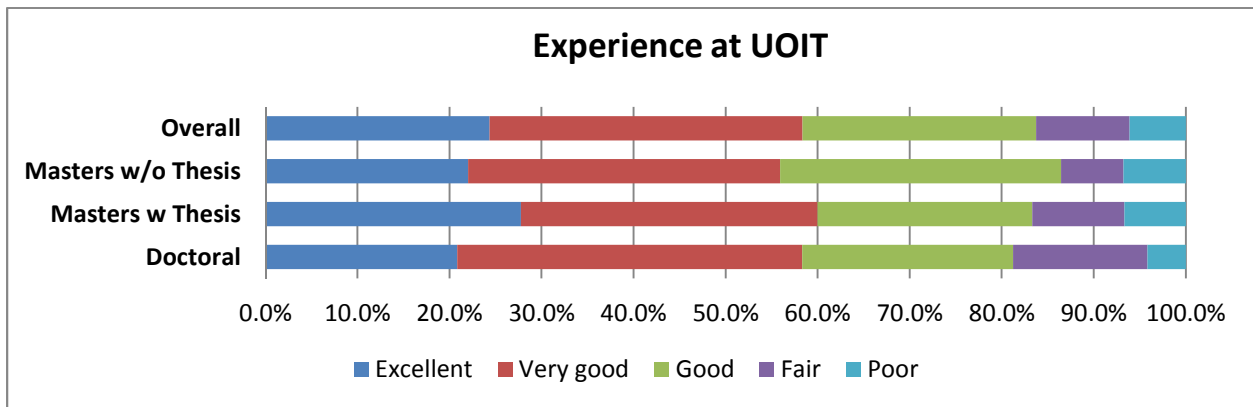
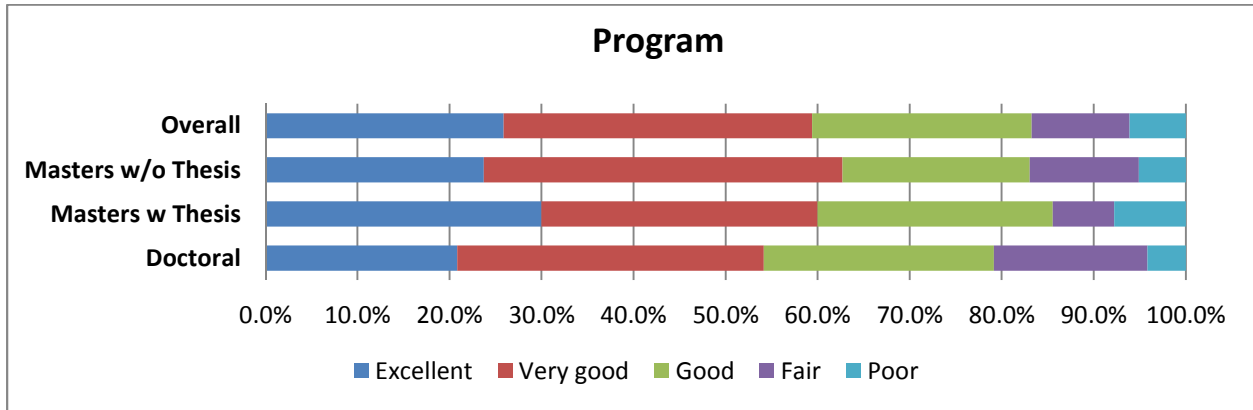
Section 3 – Overall Satisfaction

If you were to start your graduate/ professional career again, would you select this same university?

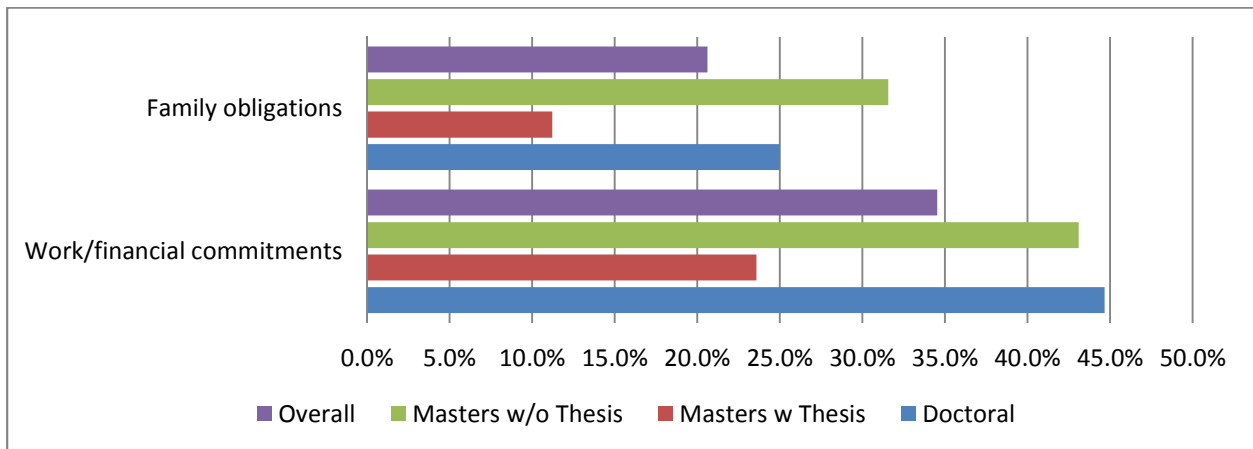


Overall, how would you rate the quality of:



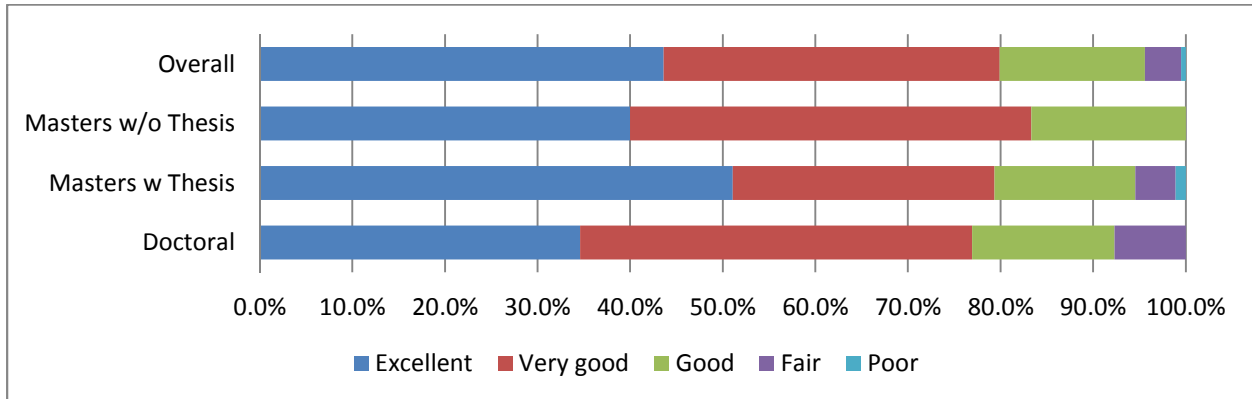


The extent to which the following factors are an obstacle to your academic progress:



Section 4 – Program Satisfaction

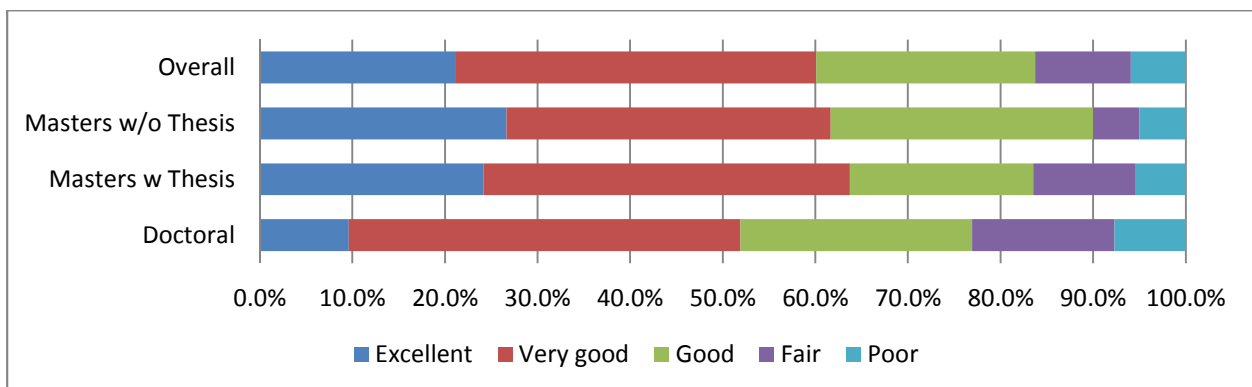
The intellectual quality of the faculty



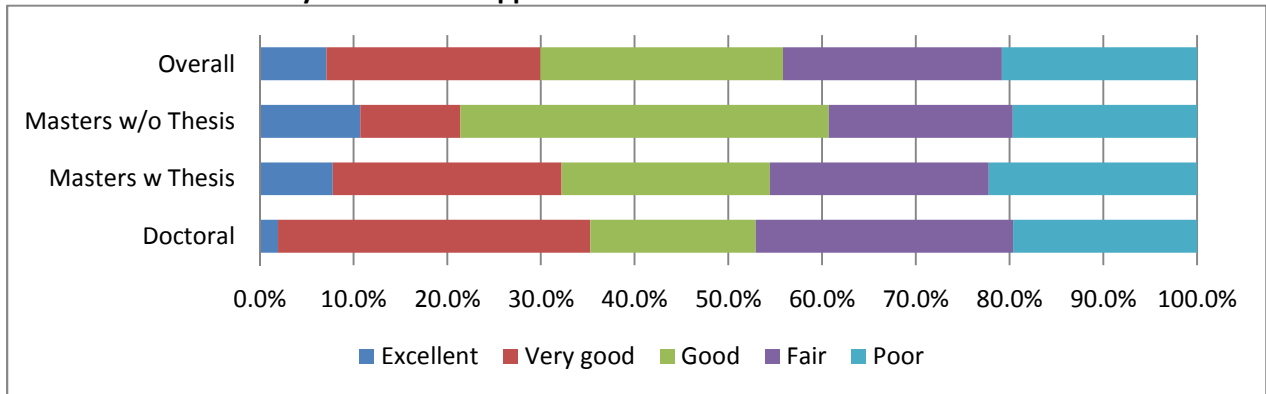
Relationship b/w Faculty and Students



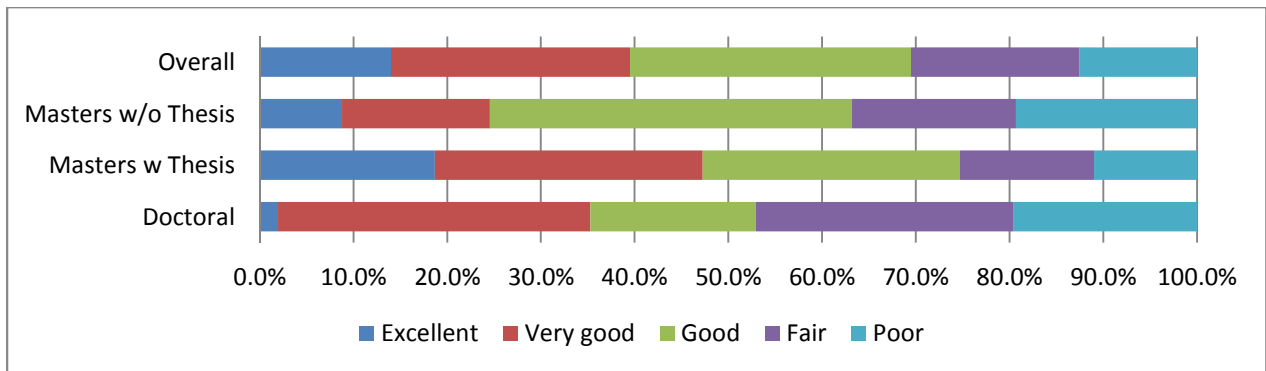
Quality of Graduate Level Teaching



Advice on the availability of Financial Support



Quality of Academic Advising and Guidance

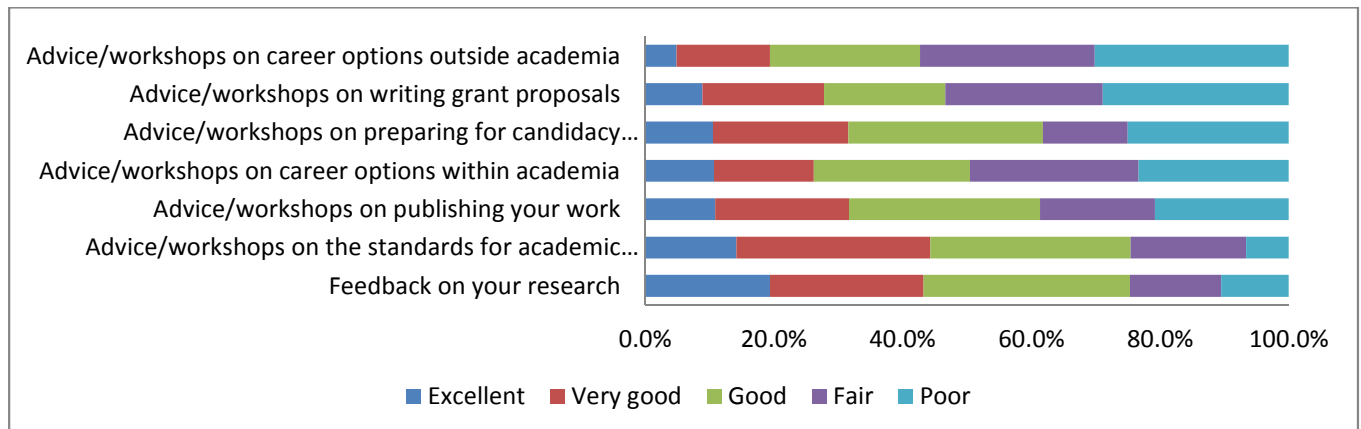


Helpfulness of Staff



Section 5 – Professional Skills Development

How would you rate the quality of the support and training you received in these areas? (Doctoral and Masters w Thesis only)

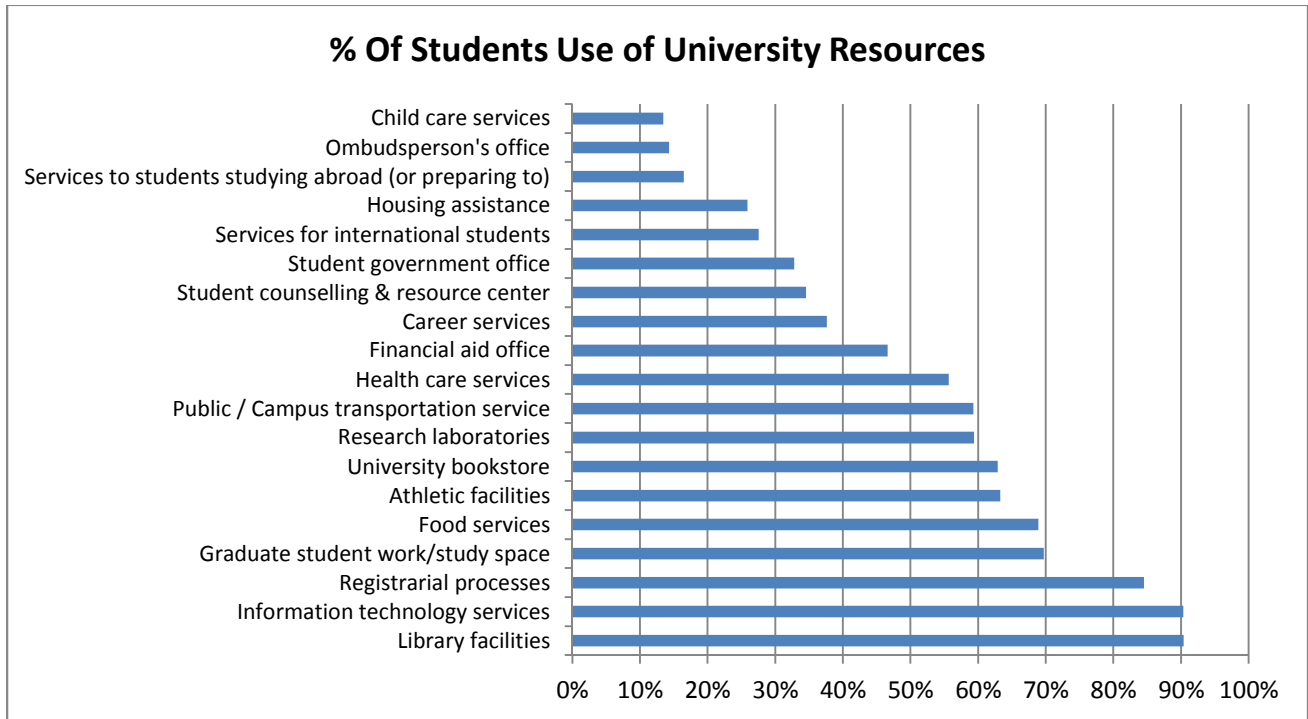


Section 6 – Financial

Estimated the amount of educational debt, if any, you will have to repay when you have completed your graduate degree here.

Debt	UG	GR
\$0	62.4%	48.2%
\$1 - \$9,999	8.2%	15.5%
\$10,000 - \$19,999	7.7%	18.7%
\$20,000 - \$29,999	6.2%	8.8%
\$30,000 - \$39,999	6.7%	2.6%
\$40,000 - \$49,999	3.1%	3.1%
\$50,000 - \$59,999	2.6%	1.6%
\$60,000 - \$69,999	0.5%	0.0%
\$70,000 - \$79,999	0.5%	0.0%
\$80,000 or more	2.1%	1.6%

Section 7 – University Resources



Please rate the following university resources based on the quality you have experienced while using them.

